

A top-down view of various fresh vegetables arranged on a light-colored, possibly marble, surface. In the upper left are several small, round, light-brown potatoes. To their right is a dark purple eggplant with a green stem. Dominating the center-right are several long, orange carrots with green leafy tops. In the lower left is a large head of green broccoli. At the bottom center are several small, white, button-shaped mushrooms. In the lower right is a single, large, red onion. A thin, light blue rectangular border frames the central text.

WELCOME

Overview of California Pesticide Residue Monitoring Program

Michelle Armstrong
Food Safety Coordinator
May 28, 2020



DPR's Mission is to Protect Human Health and the Environment by Regulating Pesticide Sales and Use, and by Fostering Reduced-Risk Pest Management





CalEPA

California Environmental
Protection Agency



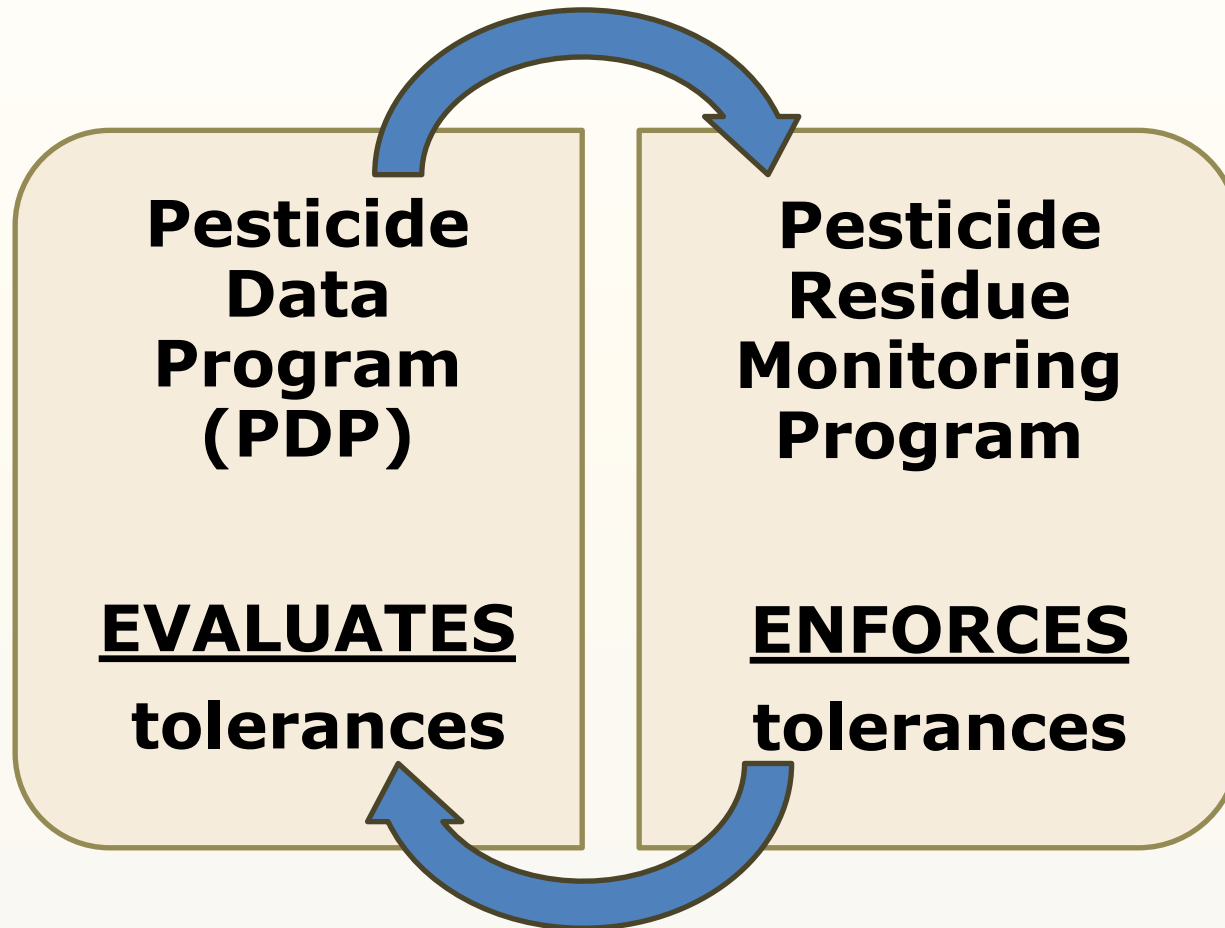
California Department of
Pesticide Regulation

County
Agricultural
Commissioners

DPR REGULATES PESTICIDE:

- REGISTRATION
- SALES
- USE
- RESIDUE MONITORING

DPR HAS TWO COMPLEMENTARY PROGRAMS:



**CALIFORNIA'S PESTICIDE
RESIDUE MONITORING
PROGRAM'S GOAL IS
TO PREVENT PUBLIC
EXPOSURE TO ILLEGAL
PESTICIDE RESIDUES**

The Food Safety Team



DPR COLLECTS SAMPLES FROM:



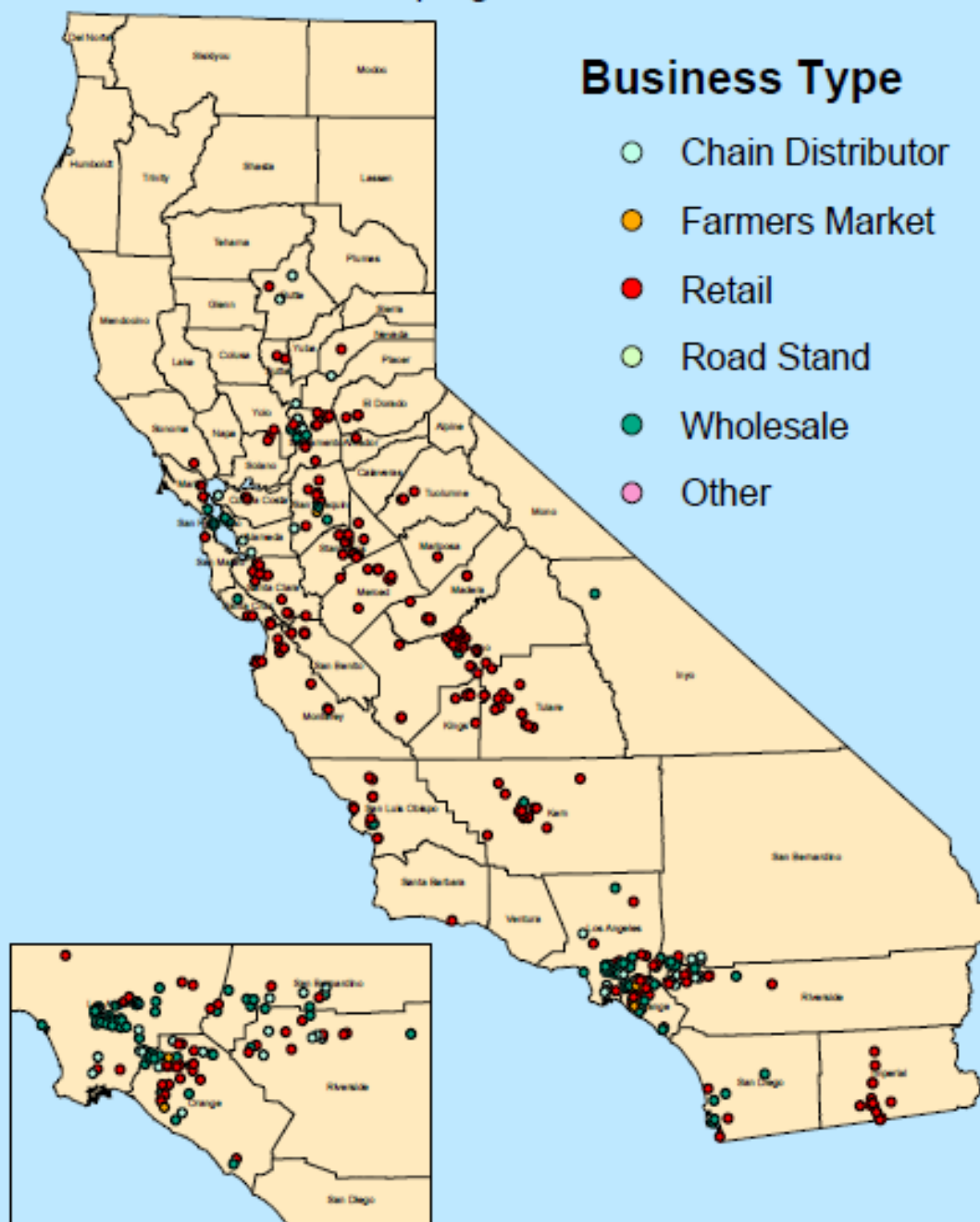
WHOLESALE AND RETAIL OUTLETS

DISTRIBUTION CENTERS



FARMERS' MARKETS

Residue Sampling Locations 2018



OAKLAND TERMINAL MARKET



DISTRIBUTION CENTER



Commodity Criteria

**Highly
Consumed By
Children**

**Highly
Consumed In
Ethnic Diets**

**Carcinogenic
Or
Teratogenic**

**Recent
History Of
Illegal
Residues**

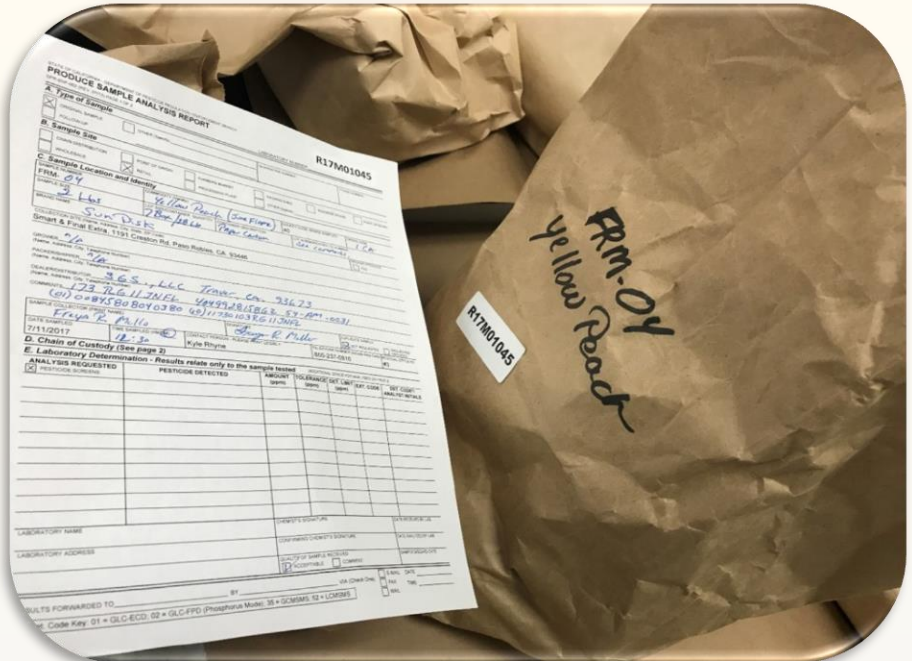
**Collected <50
In Past 2
Years**

**WE TEST PRODUCE IN ITS
RAW OR NATURAL STATE
INTENDED FOR CONSUMER
USE**

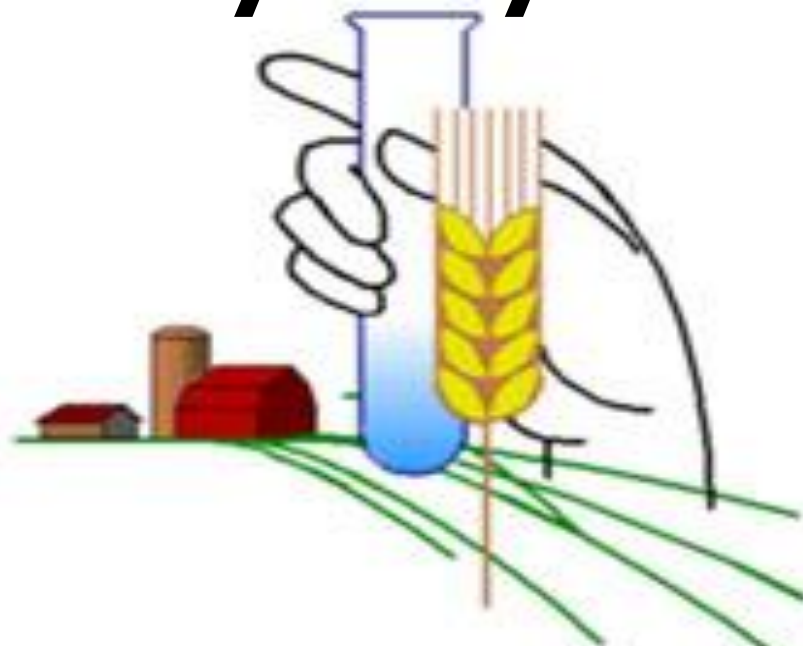
**WE DON'T WASH IT AND
WE DON'T PEEL IT!**



DPR Staff Deliver Samples to the Lab

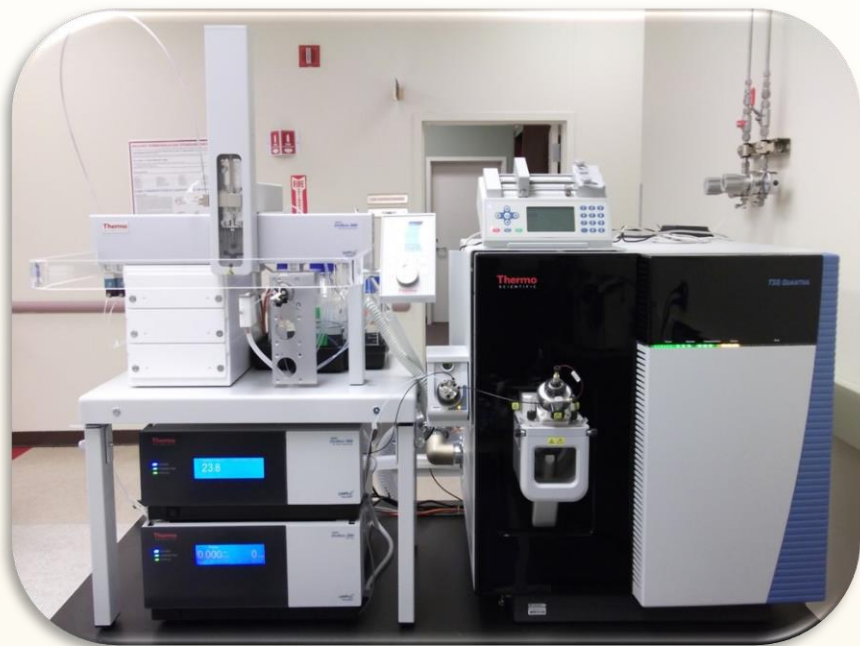


**DPR contracts with the
California Department
of Food & Agriculture
to analyze ~3600 samples
yearly**



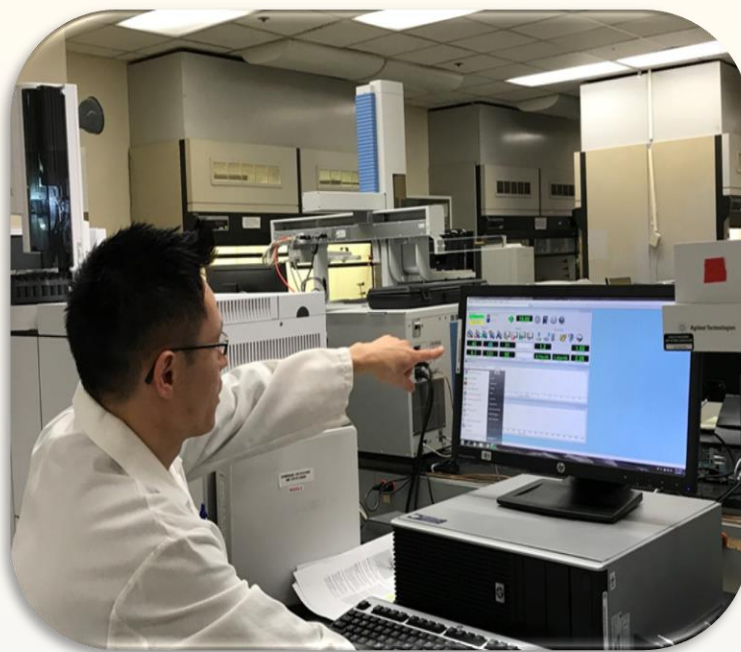
Center for Analytical
Chemistry

Pesticide Residue Analysis



- **LCMSMS**
- **GCMSMS**
- **HR LCMS**

**Pesticide Residue
Screen 500 AI's**

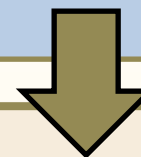


WHAT HAPPENS WHEN PRODUCE HAS A RESIDUE VIOLATION?

QUARANTINE
PRODUCE



TRACE SOURCE



RECONDITIONING

WASH, HOLD, OR HEAT UNTIL
RESIDUE IS BELOW LEGAL LIMIT



DISPOSAL

DESTROYING OR PROHIBITING
SALE OF AFFECTED PRODUCE

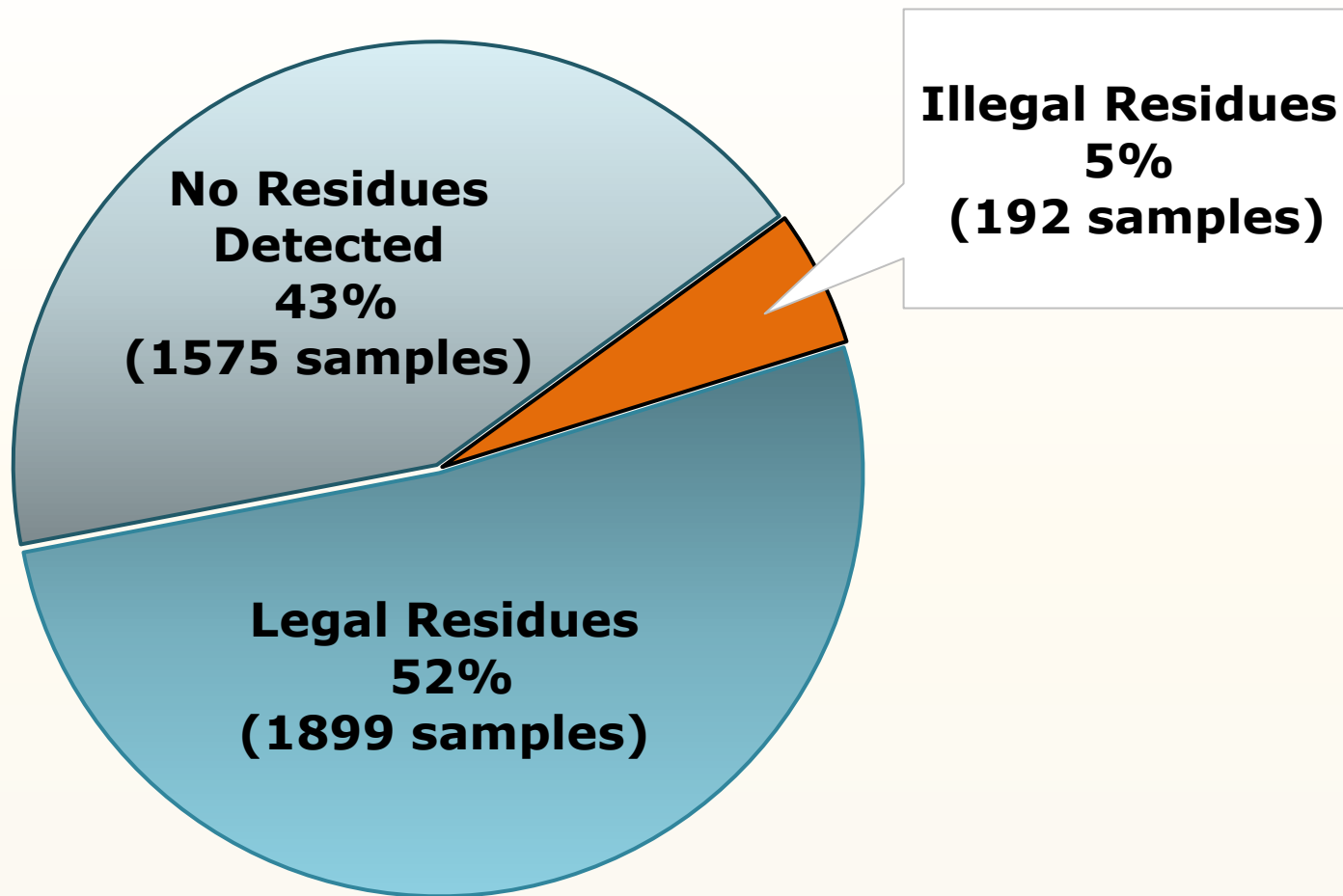
Notify FDA

Warning Letters


Levy Fines

Publish Results

2018 Results

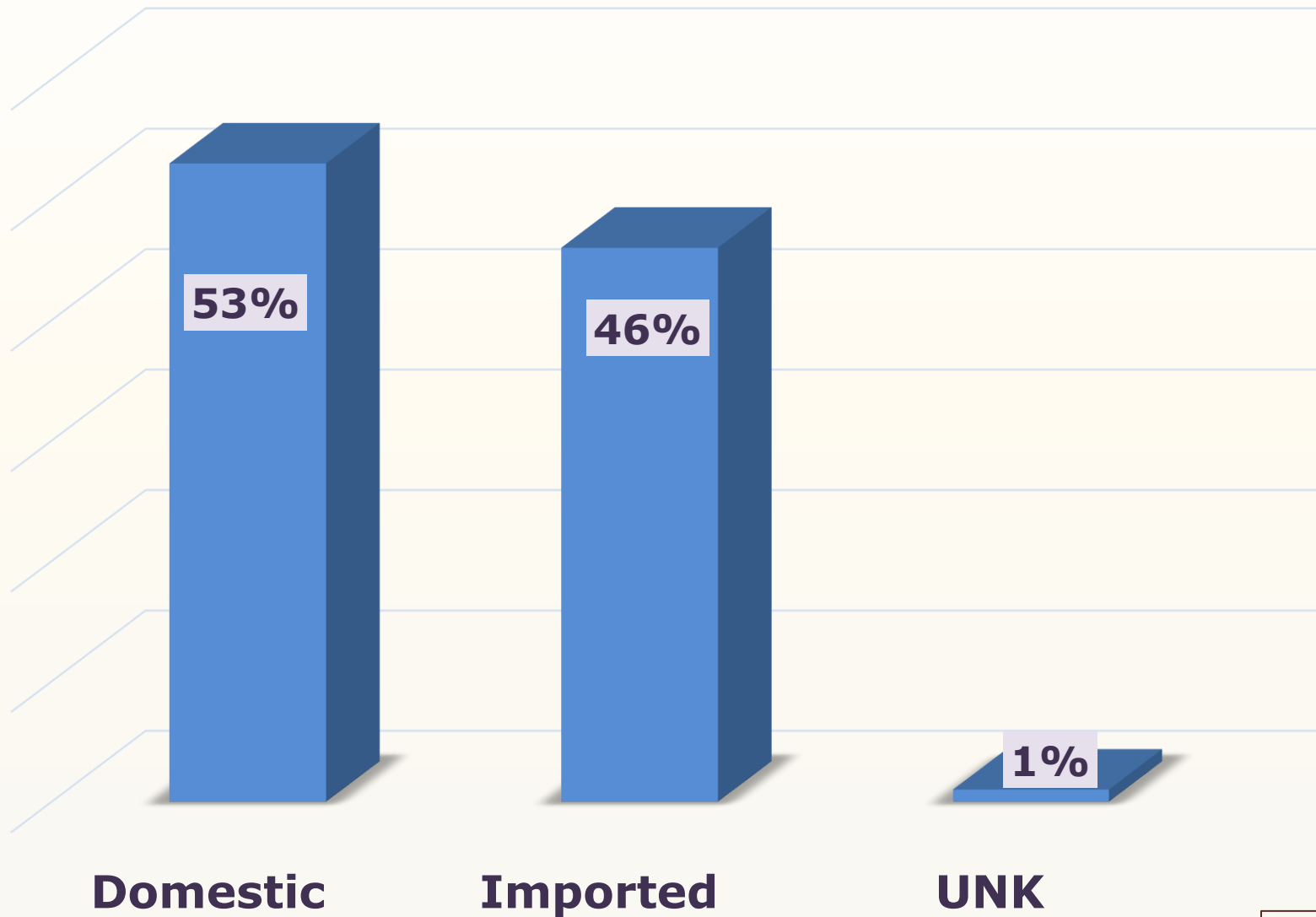


N = 3,666



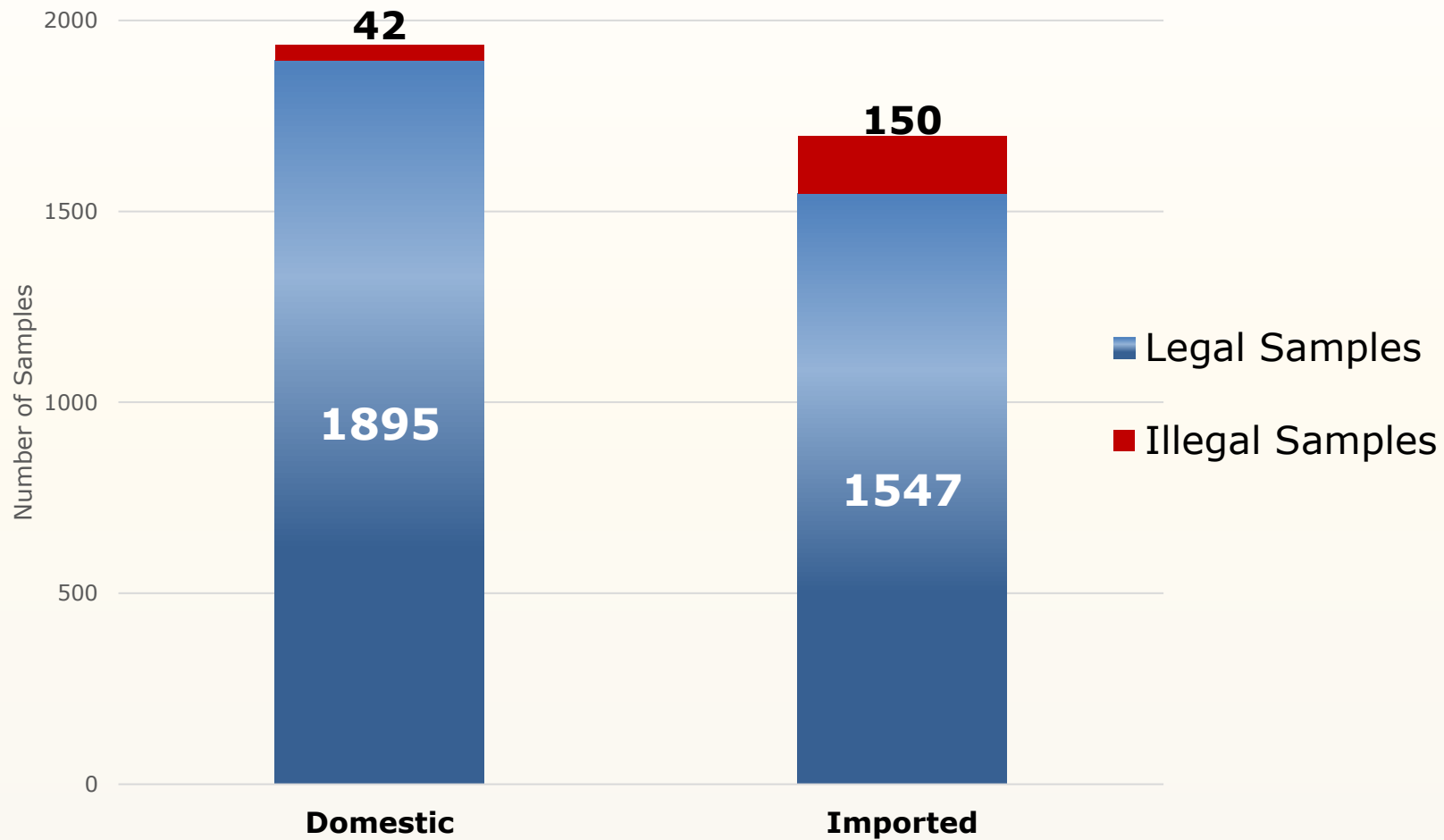
**95 % of the
Produce Tested
had Legal or No
Residues Detected**

2018 Sample Origins

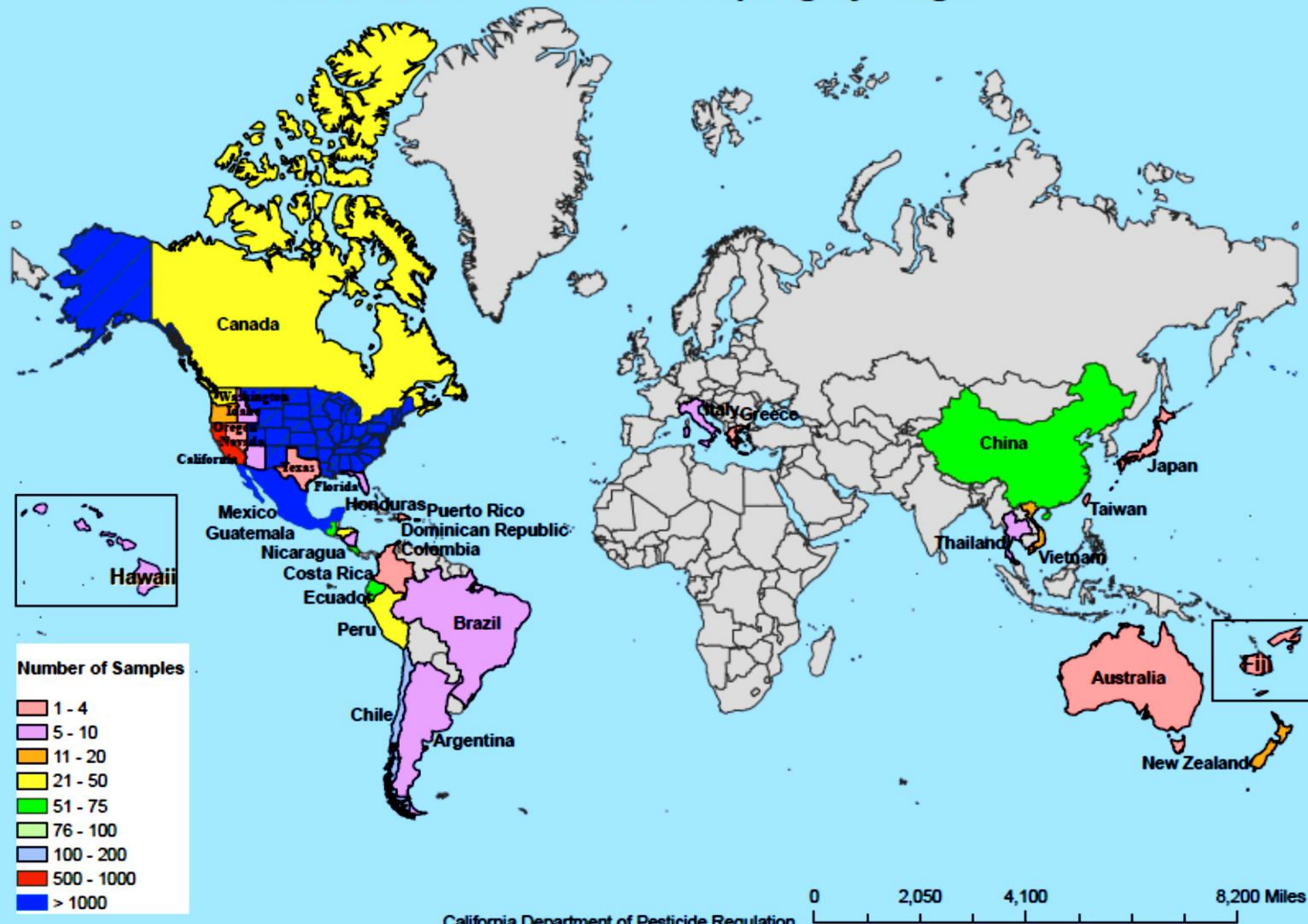


N = 3,666

2018 Violation Results

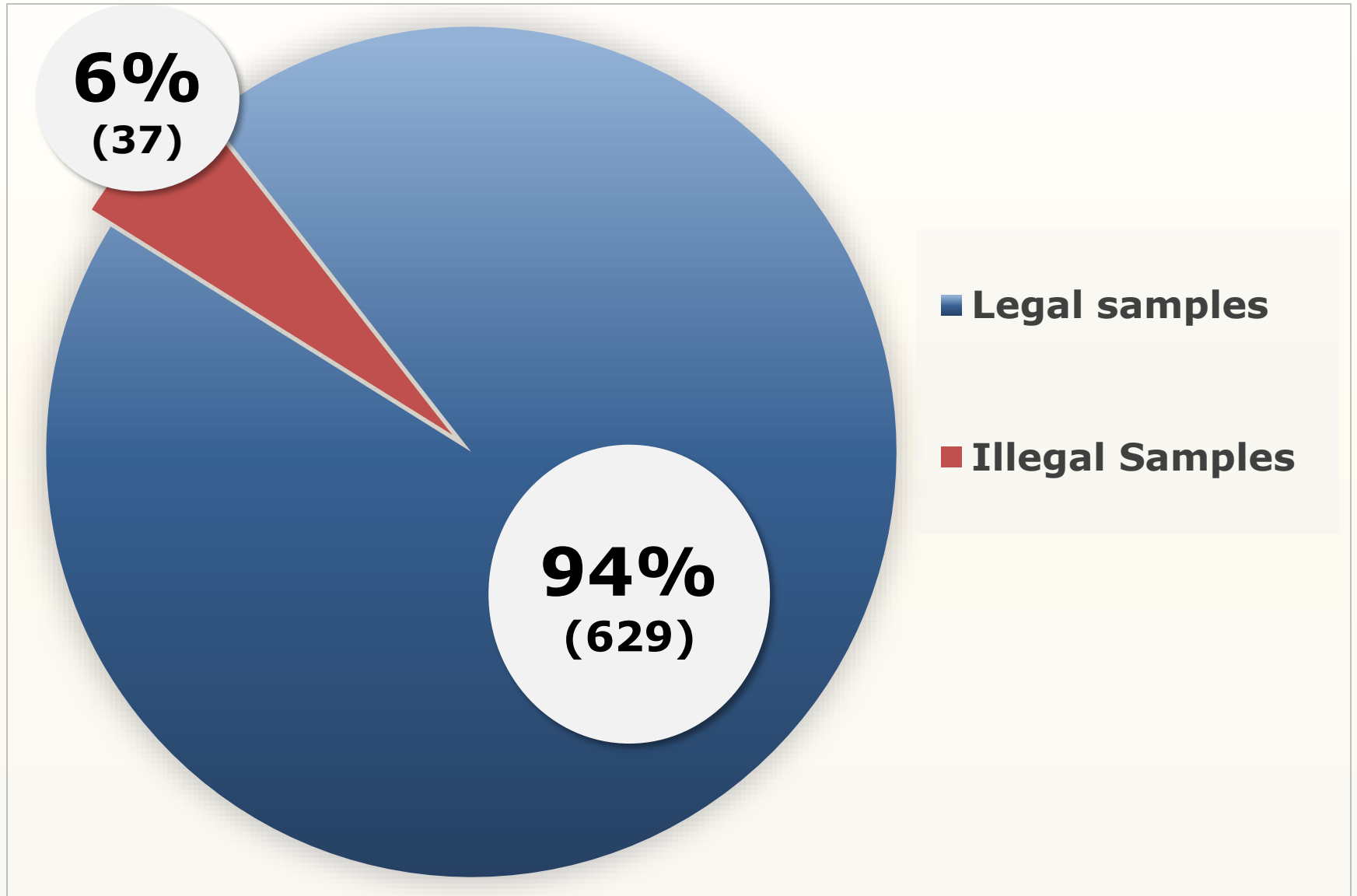


California 2018 Residue Sampling by Origin



Country of Origin	Total Samples	Illegal Samples	Percent Illegal
Canada	36	1	3%
Chile	112	3	3%
China	62	11	18%
Costa Rica	64	2	3%
Dominican Republic	3	1	33%
Guatemala	69	14	20%
Mexico	1158	103	9%
Peru	29	1	3%
United States	1937	42	2%
Vietnam	19	14	74%

2018 California Grown Results



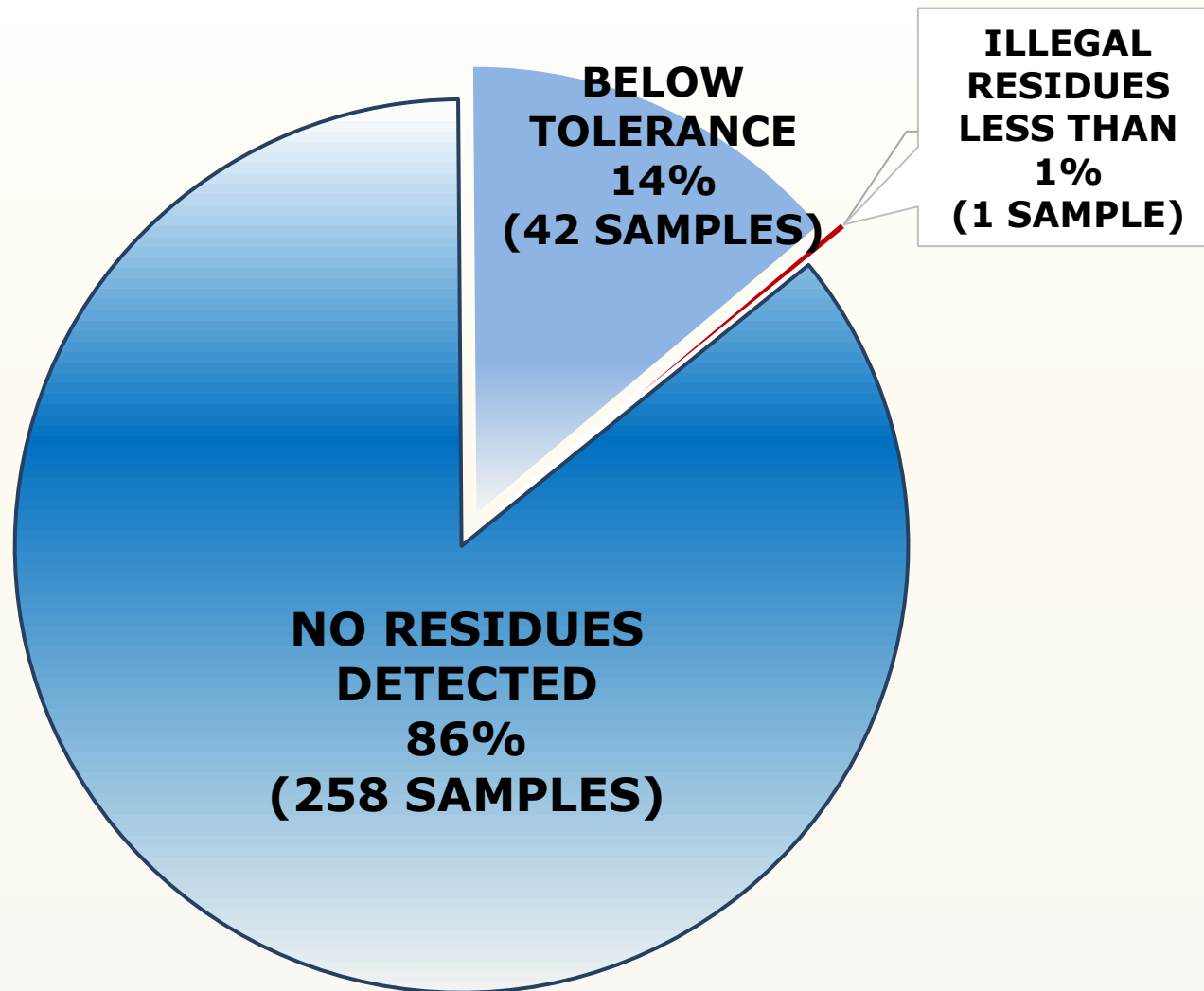
USDA ALLOWS SPECIFIC ORGANIC PESTICIDES IN ORGANIC FARMING

CERTIFIED ORGANIC MAY ALSO HAVE RESIDUES OF CONVENTIONAL PESTICIDES IF LESS THAN 5% OF U.S. EPA TOLERANCE

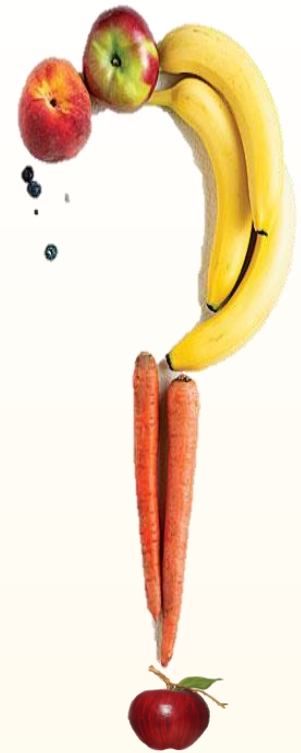


2018 ORGANIC Sample Results

**DPR
COLLECTED
301 ORGANIC
SAMPLES IN
2018**



Any Questions



Results available at:

<http://www.cdpr.ca.gov>

Click on “A-Z Index”, → “Residue Monitoring Program”

**Michelle Armstrong
California Dept. of Pesticide Regulation
Enforcement Branch
Michelle.Armstrong@cdpr.ca.gov**

WORKS CITED

**CALIFORNIA DEPARTMENT OF FOOD AND AGRICULTURE, CA
STATE ORGANIC PROGRAM**

<HTTPS://WWW.CDFA.CA.GOV/IS/ORGANICPROGRAM/>

**CALIFORNIA DEPARTMENT OF PESTICIDE REGULATION,
PESTICIDE RESIDUE MONITORING PROGRAM**

<HTTPS://WWW.CDPR.CA.GOV/DOCS/ENFORCE/RESIDUE/RSMONMNU.HTM>

**CALIFORNIA DEPARTMENT OF PESTICIDE REGULATION,
PRODUCE WITH ILLEGAL PESTICIDE RESIDUE FINES AND
SETTLEMENTS**

<HTTPS://WWW.CDPR.CA.GOV/DOCS/ENFORCE/RESIDUE/PESTICIDE/RESIDUE.HTM>

**US ENVIRONMENTAL PROTECTION AGENCY, LAWS &
REGULATIONS**

<HTTPS://WWW.EPA.GOV/LAWS-REGULATIONS/REGULATIONS>